

THE FUTURE OF CONNECTION
ovvo[®]

Patented

Virutex[®]

Professional solutions



Fast, easy and accurate assembly.

Novelty



Router for connectors **AB181**
Router for placing connectors for detachable or fixed assemblies.

AB181 Router for connectors

Machine specially designed for trimming the slots to place the OVVOTM automatic connectors for assembling panels. Easy to use it makes the trimming fast and accurate.



Professional solutions

Patented model

Powerful 1000 W motor with electronics for speed adjustment and to keep the speed constant under load.

Precise adjustment of the panel thickness.

Includes guide for multiple slots trimming.

Positioning of the machine by mean of retractable stoppers and visual references. No need to take measures.

Trimming in several angles.

Precise adjustment of the trimming depth.

Dust collector nozzle. For a connection to an external dust collection.

Fast trimming depth adjustment for several dimensions of the connectors. No tools or other machine adjustments needed.

Automatic stoppers for 0°, 45° and 90°.

Adjustable fence for trimming in several angles.

Non-slip double base with non-scratch protection.

Trimming at 90° using the guide



Trimming at 45°



Trimming at 0°



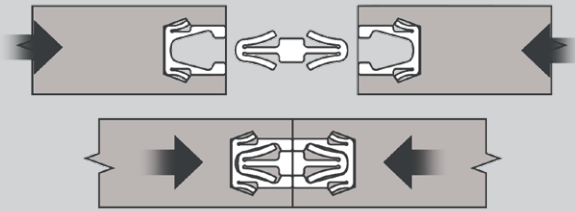
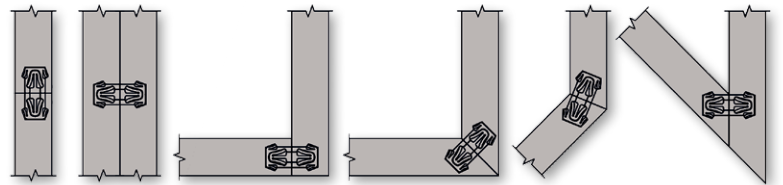
Patented

THE FUTURE OF CONNECTION
OVVO

OVVO® assembling system.

Le système de connexion OVVO® élimine des heures de montage et permet le transport de meubles en paquets plats, avec un gain de temps et de volume en conséquence. Il est pas nécessaire d'utiliser des outils, de la colle ou des vis pour l'assemblage des pièces. Le système OVVO® est une solution qui permet l'assemblage facile de deux pièces sans l'utilisation des méthodes traditionnelles.

Allows a variety of joints and angles.



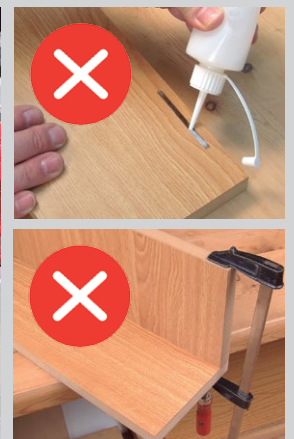
Push > Click > Connect

Very easy operation. Just press both pieces to be assembled, with the connector aligned, until to hear a "click". The assembly is done. It is an invisible solution, with a internal automatic clamp, that creates a perfect union between the two assembled pieces.

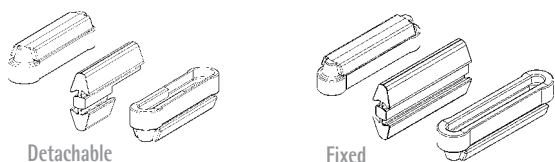


Un système d'assemblage avec des avantages uniques

- Permet un assemblage totalement invisible.
- Facilement démontable, sans des outis.
- Facil transport des pièces démontées.
- Montage rapide sur le site. Économie de temps.
- Assemblages sans besoin de la colle.
- Sans serre-joints, assemblage instantané.



Connectors detachable and fixed



Detachable

Fixed

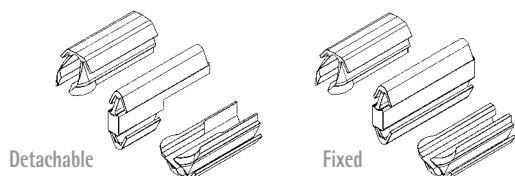
Connectors for 19 mm boards or thicker

Ref.	Specifications	Boxes
7905005	Detachable connector 1240	1000 un.
7905006	Detachable connector 1240	300 un.
7905007	Detachable connector 1240	100 un.
7905008	Fixed connector 1240	1000 un.
7905009	Fixed connector 1240	300 un.
7905010	Fixed connector 1240	100 un.

1240



Video demo



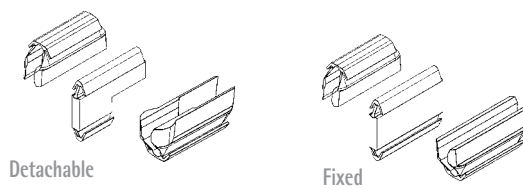
Detachable

Fixed

Connectors for 12 mm boards or thicker

Ref.	Specifications	Boxes
7905025	Detachable connector V0930	1000 un.
7905024	Detachable connector V0930	300 un.
7905023	Detachable connector V0930	100 un.
7905028	Fixed connector V0930	1000 un.
7905027	Fixed connector V0930	300 un.
7905026	Fixed connector V0930	100 un.

V0930



Detachable

Fixed

Connectors for 15 mm boards or thicker

Ref.	Specifications	Boxes
7905031	Detachable connector V1230	1000 un.
7905030	Detachable connector V1230	300 un.
7905029	Detachable connector V1230	100 un.
7905034	Fixed connector V1230	1000 un.
7905033	Fixed connector V1230	300 un.
7905032	Fixed connector V1230	100 un.

V1230

Optional

Bits for AB181

- Carbide bit for connector 1240 ref. 7940398 (standard equipment)
- Diamond bit for connector 1240 ref. 77940402
- Carbide bit for connector 0825 ref. 77940401
- Carbide bit for connector 1225 ref. 77940395

Accessories for AB181

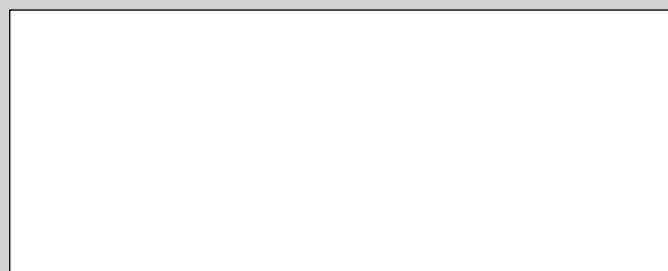
- Dust collection attachment 5 m ref. 1746245
- Dust collection attachment 2.25 m ref. 6446073
- AS182K Vacuum cleaner 27 l. ref. 8200100

Bits for CNC (Ø12) (not for AB181)

- Carbide bit for connector 1240 ref. 7940400
- Diamond bit for connector 1240 ref. 77940388
- Carbide bit for connector 0825 ref. 77940396
- Diamond bit for connector 0825 ref. 77940393
- Carbide bit for connector 1225 ref. 77940392

Specifications

Input power	1,000 W
No-load speed	14,000-27,000/min
Chuck collet	8 mm
Weight	4.7 kg



Printed in Spain. Specifications subject to change without previous notice.

Ed. 01/2018 EN

